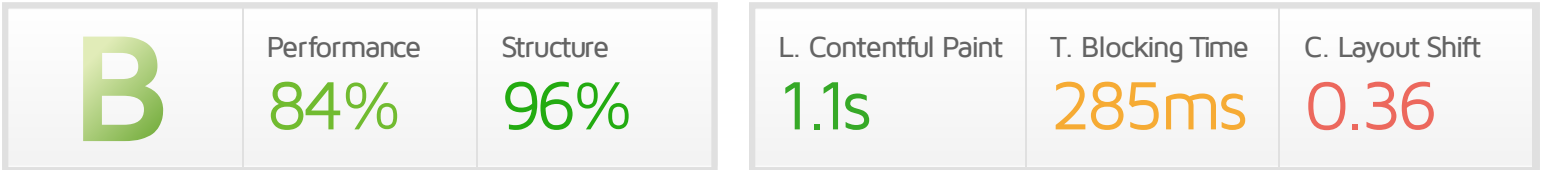




Performance Report for: http://www.mooiebende.nl/

Report generated: Wed, Nov 18, 2020 11:43 AM +0100
 Test Server Location: London, UK
 Using: Chrome (Desktop) 86.0.4240.193, Lighthouse 6.4.1



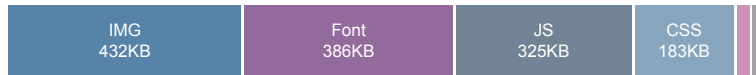
Top Issues

IMPACT	AUDIT	
Med	Use explicit width and height on image elements	
Med	Avoid large layout shifts	5 elements found
Low	Avoid multiple page redirects	Potential savings of 100 ms
Low	Avoid long main-thread tasks	5 long tasks found
Low	Reduce JavaScript execution time	0.6 s

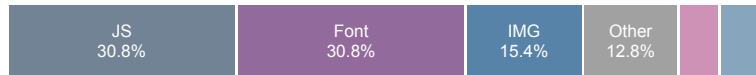
Page Details



Total Page Size - 1.33MB



Total Page Requests - 39



How does this affect me?

Today's web user expects a fast and seamless website experience. Delivering that fast experience can result in increased visits, conversions and overall happiness.

As if you didn't need more incentive, **Google has announced that they are using page speed in their ranking algorithm.**

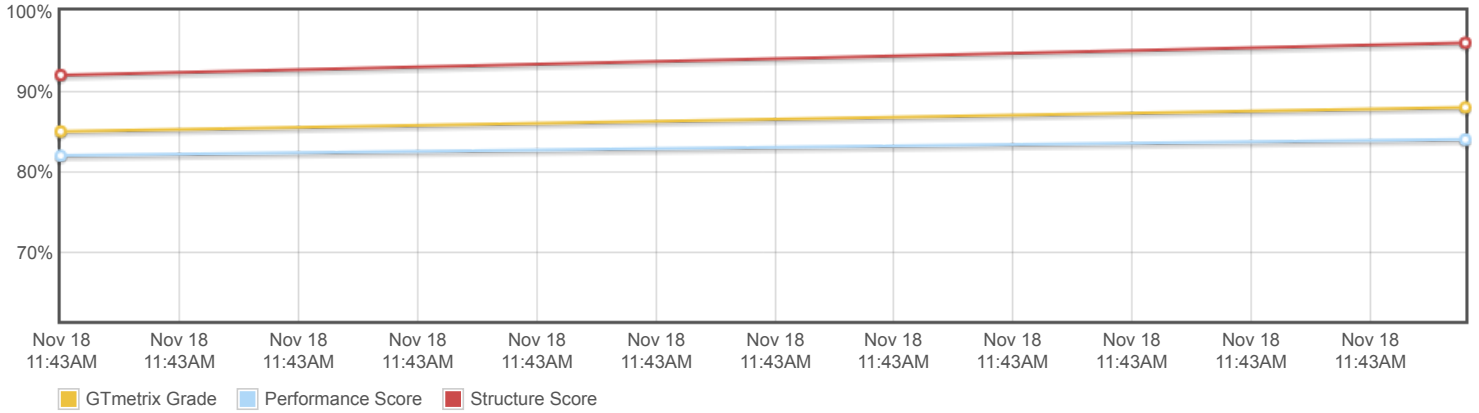
About GTmetrix



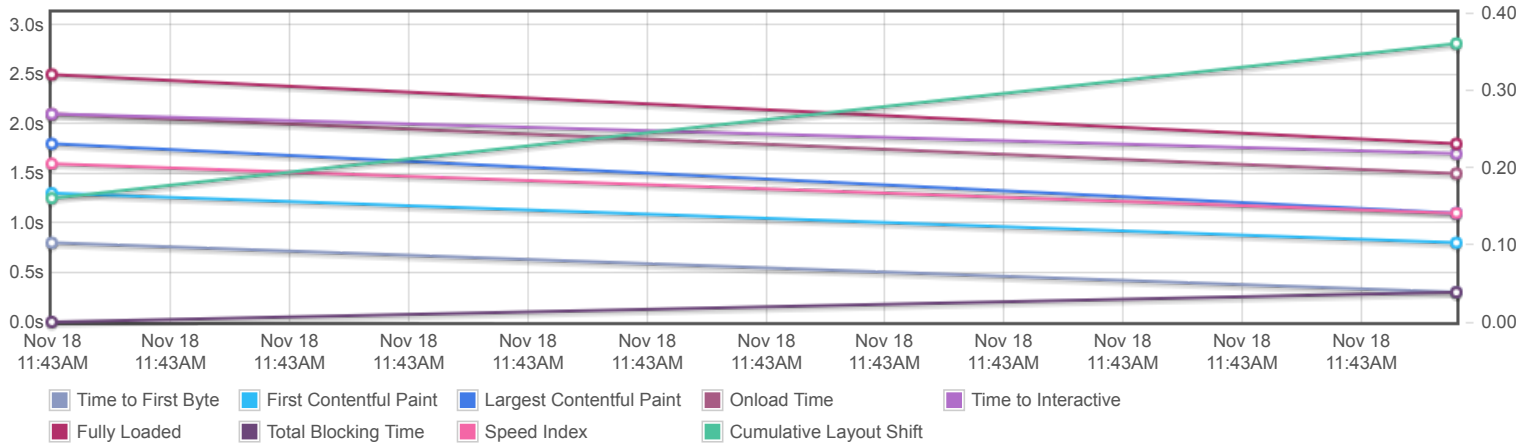
GTmetrix is developed by the good folks at **Carbon60**, a Canadian hosting company with over 24 years experience in web technology.

<https://carbon60.com/>

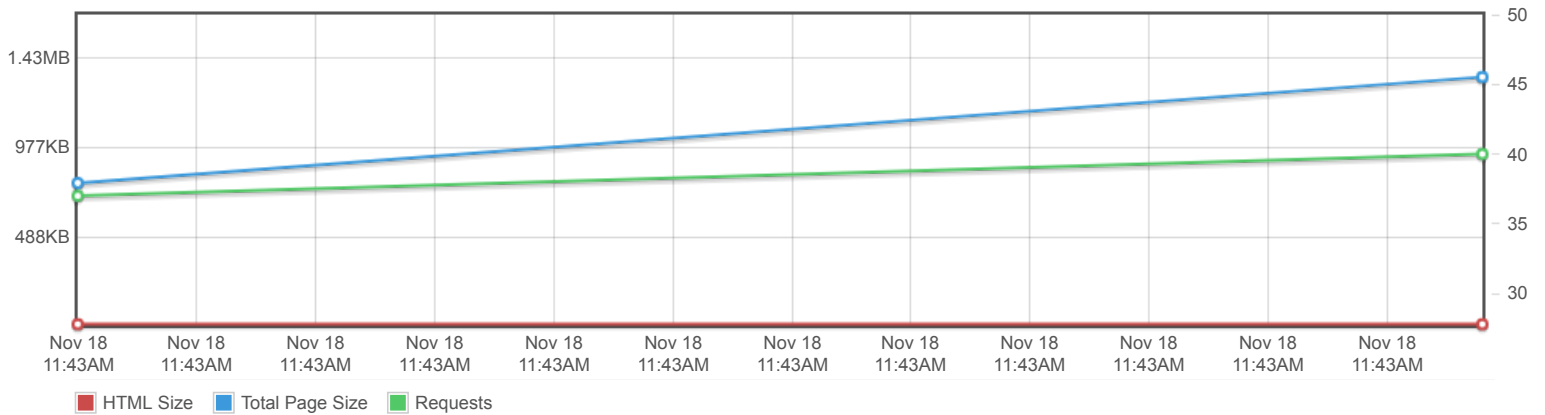
Page scores



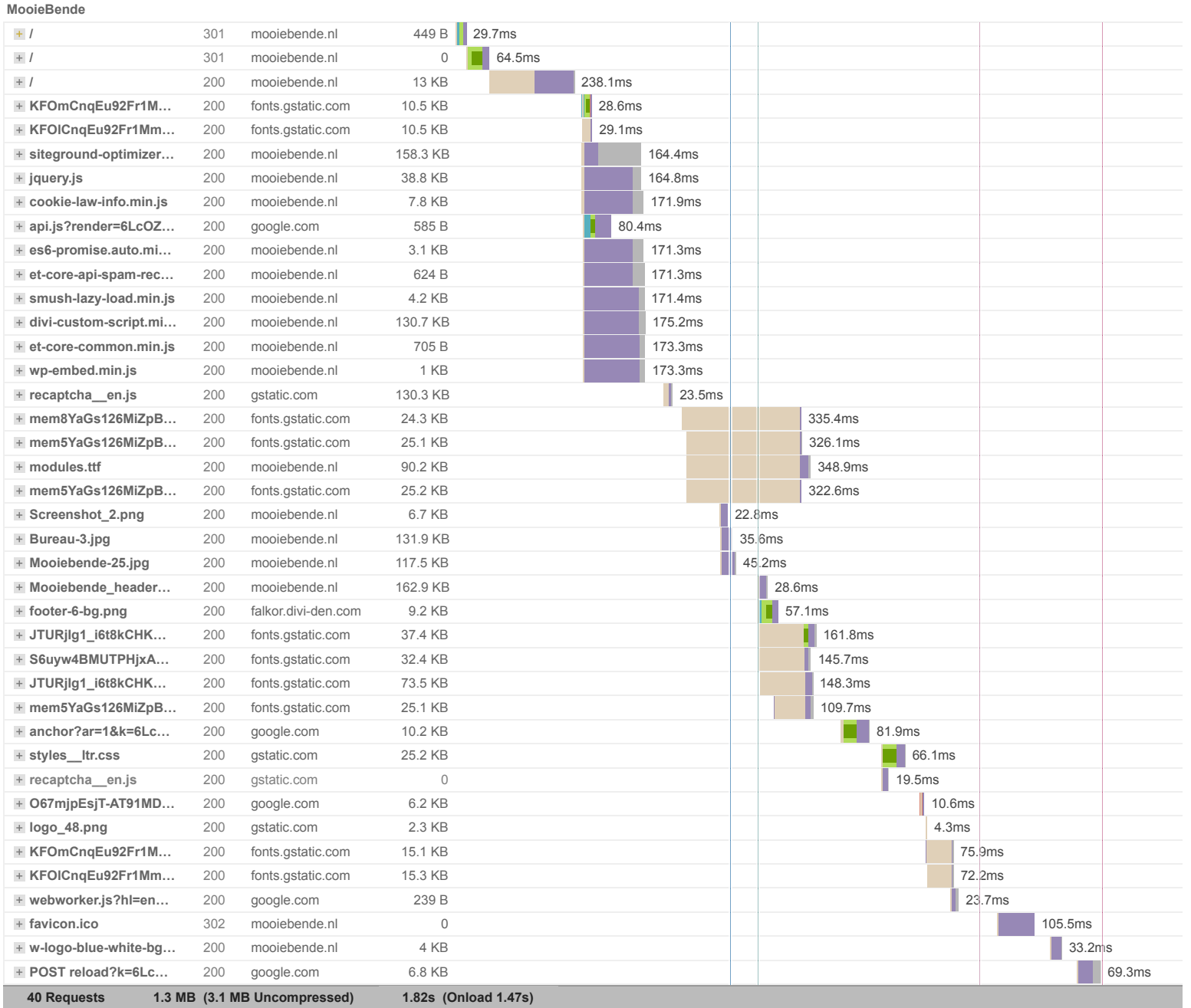
Page metrics

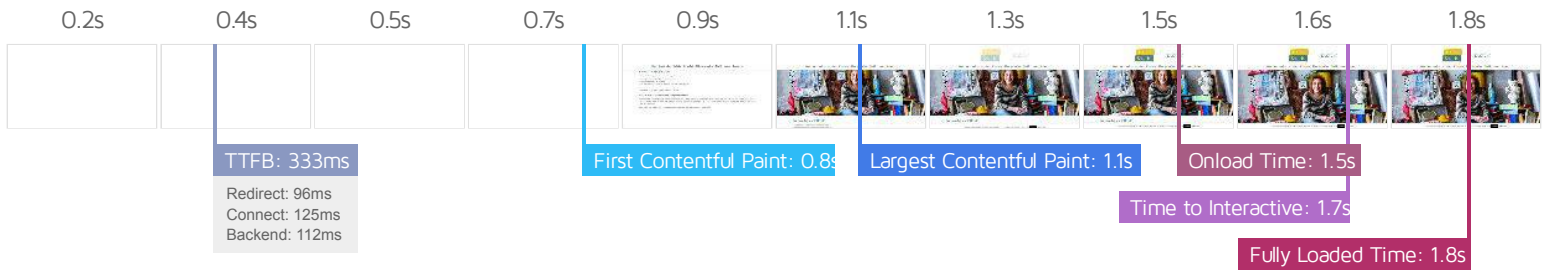


Page sizes and request counts



The waterfall chart displays the loading behaviour of your site in your selected browser. It can be used to discover simple issues such as 404's or more complex issues such as external resources blocking page rendering.





Performance Metrics

<h3>First Contentful Paint</h3> <p>How quickly content like text or images are painted onto your page. A good user experience is 0.9s or less.</p>	<p>Good - Nothing to do here</p> <p>0.8s</p>	<h3>Time to Interactive</h3> <p>How long it takes for your page to become fully interactive. A good user experience is 2.5s or less.</p>	<p>Good - Nothing to do here</p> <p>1.7s</p>
<h3>Speed Index</h3> <p>How quickly the contents of your page are visibly populated. A good user experience is 1.3s or less.</p>	<p>Good - Nothing to do here</p> <p>1.1s</p>	<h3>Total Blocking Time</h3> <p>How much time is blocked by scripts during your page loading process. A good user experience is 150ms or less.</p>	<p>Longer than recommended</p> <p>285ms</p>
<h3>Largest Contentful Paint</h3> <p>How long it takes for the largest element of content (e.g. a hero image) to be painted on your page. A good user experience is 1.2s or less.</p>	<p>Good - Nothing to do here</p> <p>1.1s</p>	<h3>Cumulative Layout Shift</h3> <p>How much your page's layout shifts as it loads. A good user experience is a score of 0.1 or less.</p>	<p>Much more than recommended</p> <p>0.36</p>

Browser Timings

Redirect	96ms	Connect	125ms	Backend	112ms
TTFB	333ms	First Paint	0.8s	DOM Int.	0.8s
DOM Loaded	0.8s	Onload	1.5s	Fully Loaded	1.8s

IMPACT	AUDIT	
Med	Use explicit width and height on image elements	
Med	Avoid large layout shifts	5 elements found
Low	Avoid multiple page redirects	Potential savings of 100 ms
Low	Avoid long main-thread tasks	5 long tasks found
Low	Reduce JavaScript execution time	0.6 s
Low	Serve images in next-gen formats	Potential savings of 64 KiB
Low	Avoid an excessive DOM size	226 elements
Low	Avoid enormous network payloads	Total size was 1,361 KiB
Low	Properly size images	Potential savings of 221 KiB
Low	Serve static assets with an efficient cache policy	1 resource found
Low	Remove unused CSS	Potential savings of 154 KiB
Low	Reduce initial server response time	Root document took 110 ms
Low	Avoid serving legacy JavaScript to modern browsers	Potential savings of 6 KiB
Low	Avoid chaining critical requests	17 chains found
Low	Remove unused JavaScript	Potential savings of 145 KiB
N/A	Largest Contentful Paint element	1 element found
N/A	Minimize main-thread work	1.2 s
N/A	Reduce the impact of third-party code	Third-party code blocked the main thread for 60 ms
N/A	User Timing marks and measures	